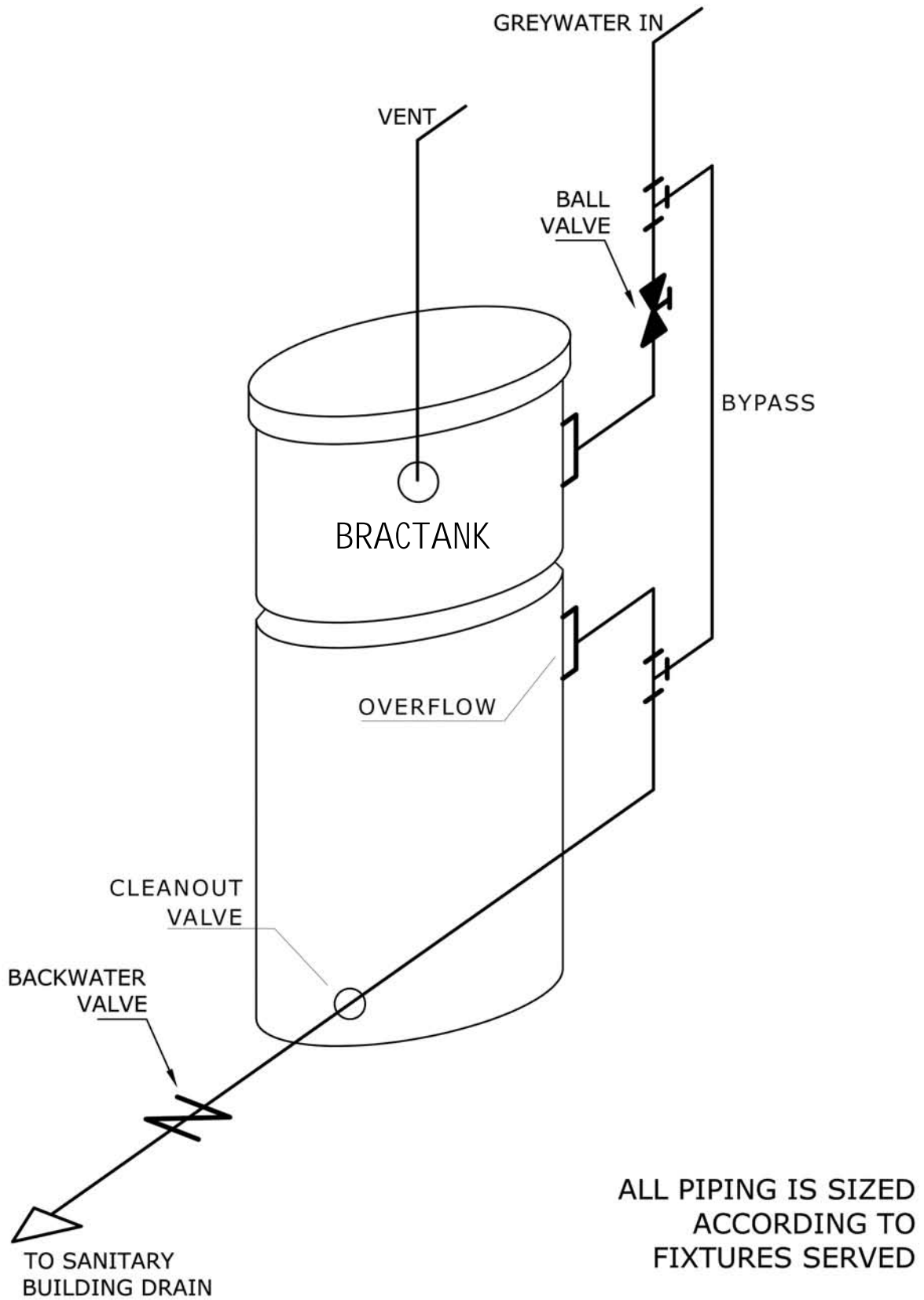


Plumbing Notes

Plumbing codes vary by jurisdiction. Your certified plumber will know the codes for your area. These notes are provided for informational purposes only, and as a general guide for your plumber to follow. About Cross Connection Control Devices (CCCD). CCCD is a generic term that refers to devices or methods that prevent potable water supplies from being contaminated by non-potable water. A CCCD can be as simple as an air gap, or as complex as a Reduced Pressure Backflow Assembly (RP). Other common types of CCCDs include Dual Check Valve Assemblies (DCVA), and simple check valves. Your local plumbing codes will determine which type of CCCD is required for your particular installation.

Plumbing Installation Instructions for the Brac System

1. If removed for shipping, reinstall the cleanout valve at the bottom of the tank, using liquid Teflon thread sealer, and being careful not to cross-thread.
2. Position the Brac Tank in a location so that all connections will remain accessible.
3. Calculate the fixture units for the tubs & showers that will drain into the Brac Tank, then size the inlet, vent and overflow accordingly.
4. Following local plumbing codes, connect the drain lines from the fixtures to the grey water inlet port of the Brac Tank, and install a bypass to the overflow drain. For bypass piping, install a Tee "standing up" upstream of the greywater ball valve with a minimum of 6" horizontally between Tee and 90, then connect to the overflow piping upstream of the backwater valve. The 6" horizontal length will prevent the loss of greywater through the bypass during normal operation.
5. Install a backwater valve (such as a swing check valve) down stream of the overflow port, and connect the overflow pipe directly to the building drain.
6. The vent port must terminate to open air, or be connected to another vent that terminates to open air.
7. Install a cross-connection control device (CCCD) on the potable water pipe to the "fresh water in" port of the Brac Tank.
8. Install a check valve on the grey water pipe to the toilets being served; this will prevent the line from de-pressurizing.
9. In case of power failure, it is recommended that a bypass line with shut-off valves be installed between the "potable water in" and the "grey water out" lines, downstream of the CCCD.
10. Follow the procedure in the user manual for adjusting the control rod stops.
11. Factory pressure testing may have left behind a small amount of water in the pump. After installation, flush any rust-colored water from the irrigation faucet, and flush the customer's toilets several times until the water runs clear.



GREYWATER BYPASS & SEWER CONNECTION

